



USER MANUAL

FOR AUTOMATIC A/C CHARGING STATION

BURAN



ITECH
di Moro Giampaolo

INDEX

1	INTRODUCTION.....	3
1.1	Safety instructions	3
2	EQUIPMENT.....	4
3	USE	5
3.1	Device elements	5
3.2	Preparation for first use	8
3.3	Automatic use.....	11
3.4	Manual use.....	16
3.5	Synoptic diagram: automatic mode.....	19
3.6	Synoptic diagram: manual mode	20
3.7	Pressures test.....	21
4	SERVICE	22
4.1	New/exhausted oil	22
4.2	Dehydrator filter replacement	23
4.3	Vacuum pump oil replacement	24
4.4	Date and time setting.....	25
4.5	Language setting	25
4.6	Default vacuum time setting	26
4.7	Default oil quantity setting	26
4.8	Hoses length setting.....	27
4.9	Used-oil bottle capacity setting	28
4.10	Logo customization	29
4.11	Station ID viewing	30
4.12	Database loading from USB support.....	31
4.13	Logs downloading to USB drive.....	32

4.14	Information about SD memory card	33
4.15	Logs deletion.....	34
4.16	Last log printing (“print bill”).....	35
4.17	Total cycles viewing.....	35
4.18	Gas recovery	36
4.19	Oil discharging.....	37
4.20	Vacuum phase.....	38
4.21	Oil injection	39
4.22	Gas charge	40
4.23	Other operations	41
5	TECHNICAL SPECIFICATIONS	42
6	TROUBLESHOOTING	43
7	SPARE PARTS.....	45
8	CONFORMITY DECLARATIONS	47

1 INTRODUCTION

1.1 Safety instructions

This manual has been prepared to assist you during the use of A/C charging station and in order to protect your safety.



Read carefully the safety regulations listed in this manual. No responsibility is accepted in case of wrong use of the device, and in that case any warranty will be nullified.

Our A/C charging stations are destined to qualified personnel, trained to follow all safety regulations, as well as the technical instructions listed below:

- use all stations in respect of national laws and regulations;
- use protecting gloves and glasses;
- do not inhale gas;
- avoid contact with skin and/or eyes;
- do not smoke nor use free flames during station use;
- use in airy and dry environments only, not in humid ones;
- use original spare parts only;
- do not fill the gas tank more than 80% of its capacity;
- turn off the station while connecting to the vehicle A/C system;
- use refrigerant fluid R134a only;
- disconnect the station from power network during maintenance operations, which must be executed exclusively by qualified and trained personnel;
- never position the station horizontally, to avoid oil leaks from vacuum pump.

2 EQUIPMENT

- High pressure tube **RED**
- Low pressure tube **BLUE**
- Power cable 230V
- Quick coupling R134a high pressure **RED**
- Quick coupling R134a low pressure **BLUE**

The **RED** and **BLUE** quick couplings with safety closure have to be opened by rotating as depicted in Figure 1:

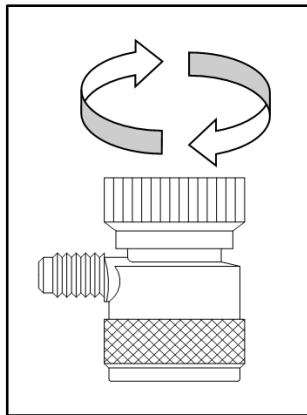


Figure 1

3 USE

3.1 Device elements

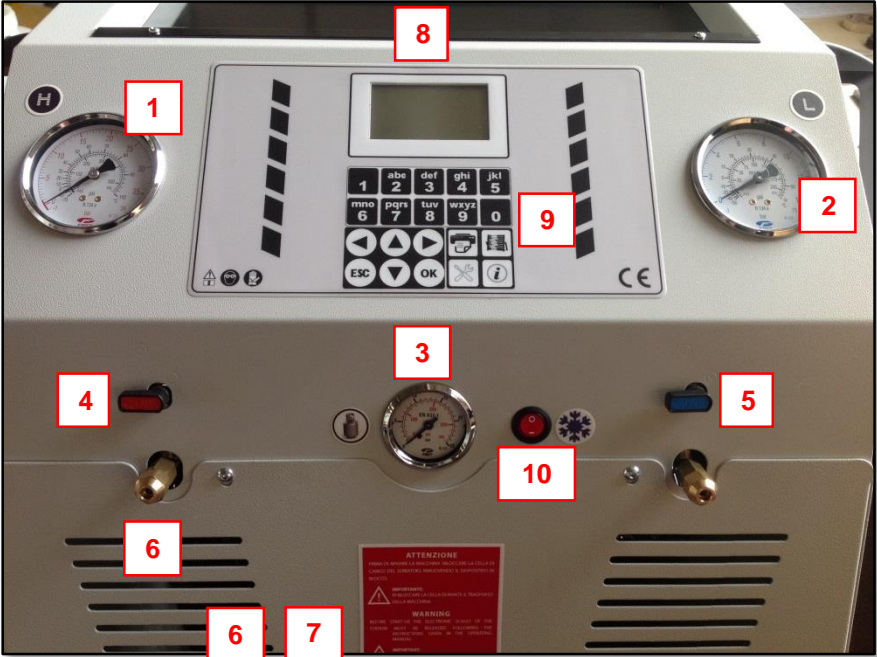


Figure 2 (elements position may vary a little)

The station includes the following elements (Figure 2):

1 - High pressure gauge:	for A/C system check and diagnosis
2 - Low pressure gauge:	for A/C system and vacuum check and diagnosis
3 - Tank pressure gauge:	for gas tank pressure check
4 - High pressure valve:	opens/closes high pressure (red)
5 - Low pressure valve:	opens/closes low pressure (blue)
6 - High pressure coupling:	connects station to car A/C system via red tube
7 - Low pressure coupling:	connects station to car A/C system via blue tube
8 - Display:	shows station info
9 - Keyboard:	permits to operate on display
10 - Warming belt button:	turns on/off the warming belt

The control panel (display + keyboard) includes the following elements and shows the following information (Figure 3):

1 - Current date	
2 - Available gas quantity	
3 - SD card	
4 - Current time	
5 - Available oil quantity	
6 - Main screen	
7 - Arrow keys	
8 - ESC button (cancel)	
9 - OK button (confirm)	
10 - Maintenance and settings button	
11 - Information button (software version)	
12 - Total cycles button	
13 - Last print button	
14 - Alphanumerical buttons	

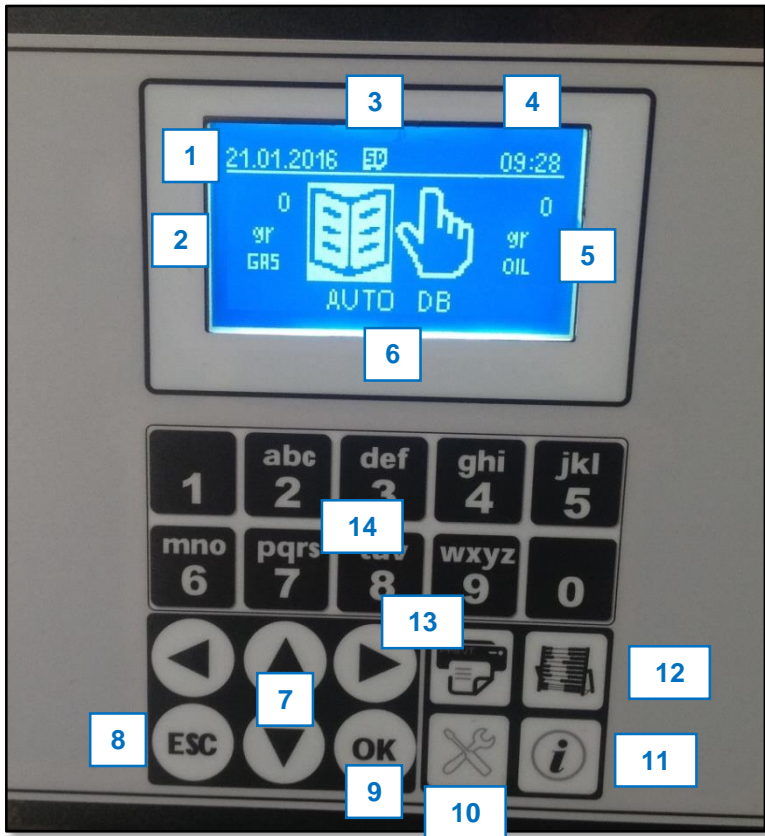


Figure 3

3.2 Preparation for first use



WARNING: Before using the station for the first time, remember to unscrew the safety lock under the station itself. This device has the purpose to lock the weight scale during transport operations, and must be repositioned in case of transport, but has to be removed during normal use, or the station will not function properly.

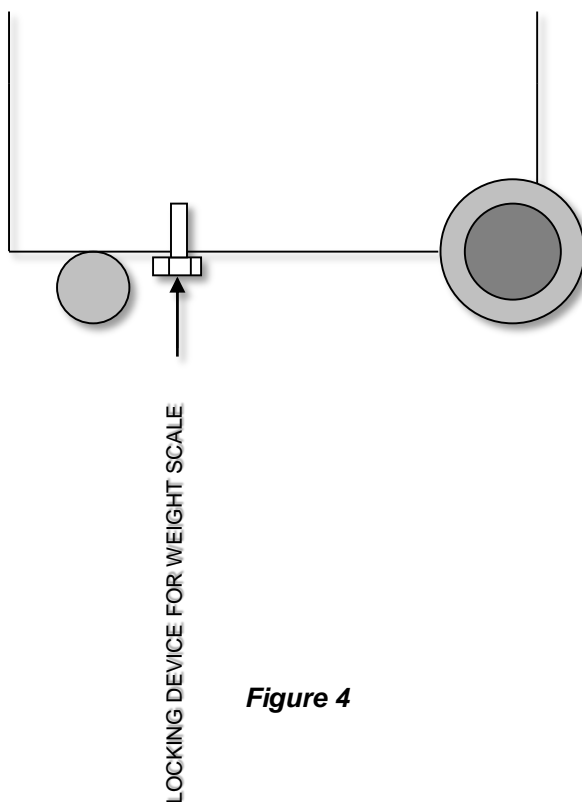



Figure 4

PREPARATION PROCEDURE

1. Ensure all valves are closed.
2. Make sure the vehicle's A/C system is of R134a kind.
3. Clean the vehicle's connectors.
4. Connect tubes to the vehicle's A/C system in this way:
RED → high pressure, **BLUE** → low pressure
5. Connect power cable to power network (220-240 V) and **turn on the station**. The refrigerant fluid quantity contained in gas tank will appear on display (for example: 3550 grams), otherwise the display will indicate  if gas quantity is insufficient.
6. If the gas is not enough, refill the gas tank within 80% of its capacity, in this way:
 - Switch to MAINTENANCE mode by pressing the proper button on the control panel.
 - Select ADVANCED MENU and confirm by pressing **OK**.
 - Input password 2454 by pressing **alphanumerical keys** and confirm by pressing **OK**.
 - Select GAS TANK FILLING and press **OK**.
 - Connect the external gas tank to the station using the high pressure coupling (**RED**), orienting the tank as in Figure 4 according to float presence or absence.

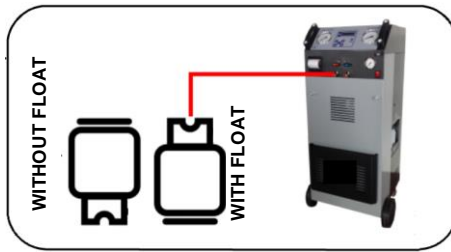



Figure 5

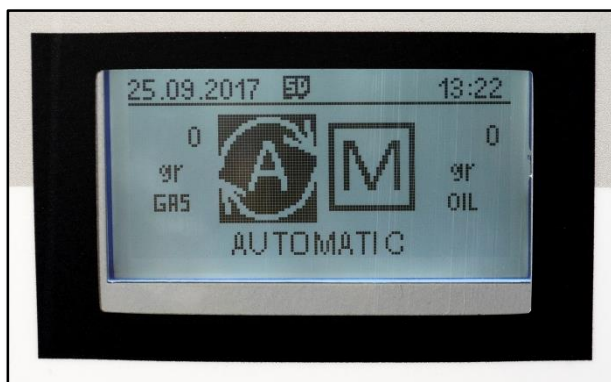
- The display shows the gas quantity to be charged (default value: 2000 g). Adjust the desired quantity by pressing **UP/DOWN**, keeping in mind that about further 500 grams of gas will be automatically added due to fluid recovery from station internal circuit.
 - Confirm the value by pressing **OK**. The station will start gas RECOVER from external tank, automatically stopping once reached the set quantity, and will ask to close the external tank valve (do it).
 - A de-icing pause is executed for about 3 minutes. At this point, refilling operation is over.
7. Fill the new oil container (→ see paragraph 4.1).
 8. Open the quick couplings (see Figure 1).
 9. Open the station **RED** and **BLUE** valves.
 10. Preparation procedure is done.

3.3 Automatic use

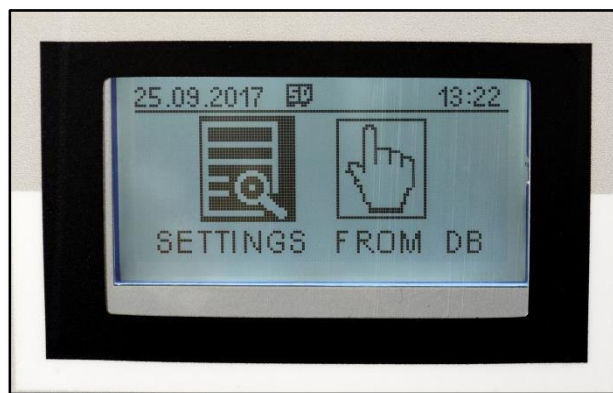
The station works both in completely automatic mode (it does the operations consecutively with minimum user intervention) and in manual mode (user can execute the operations individually).

In automatic mode, in order to execute a charging cycle, once the preparation procedure is terminated (→ paragraph 3.2), proceed in this way:

1. The station shows AUTOMATIC mode with available refrigerant quantity (on the left) and oil quantity (on the right). Refill gas and/or oil if symbol  appears and/or quantities are insufficient. Press **OK** to begin automatic cycle.



2. In the next screen, choose to use database information or to manually set parameters (Note: the station remains in automatic mode in both cases).



3. By choosing **SETTINGS FROM DB** and confirming by pressing **OK** it is possible to access database mode:
 - The vehicle database opens. Select the vehicle brand by pressing **UP/DOWN arrows** and confirm by pressing **OK**.
 - Select the vehicle model by pressing **UP/DOWN arrows** and confirm by pressing **OK**. The gas quantity is shown as stored in database (it cannot be modified).
 - The station requires to input the vehicle license plate. Use **alphanumeric keys** to input the license plate and confirm by pressing **OK**.
 - The station requires to input the vehicle total mileage (ODO). Use **alphanumeric keys** to input the value and confirm by pressing **OK**.

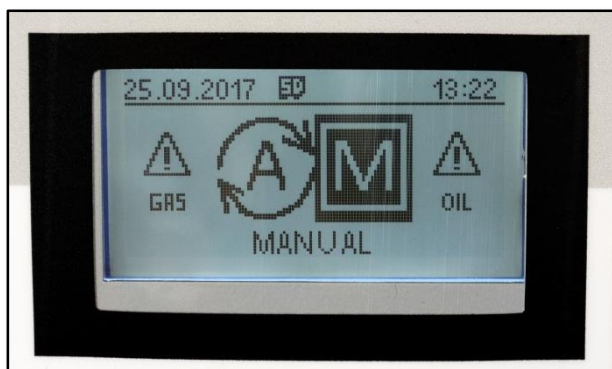
4. By choosing, instead, **MANUAL SETTINGS** and confirming by pressing **OK** it is possible to access manual mode, which allows to directly set parameters (note: remaining anyway in automatic mode):
 - The station requires to input the vehicle license plate. Use **alphanumeric keys** to input the license plate and confirm by pressing **OK**.
 - The station requires to input the vehicle total mileage (ODO). Use **alphanumeric keys** to input the value and confirm by pressing **OK**.

- The station requests the quantity of refrigerant gas to be introduced into the vehicle's A/C circuit (default: 300 grams). The amount can be accepted by pressing **OK** or adjusted by pressing **UP/DOWN arrows** and then **OK**
- The station shows the vacuum time (default: 30 minutes), which can be accepted by pressing **OK** or adjusted by pressing **UP/DOWN arrows** and then **OK**. *Note: we recommend to perform the default vacuum time.*
- (OPTIONAL FUNCTION) The station then asks to use oil standard mode or oil hybrid mode for hybrid vehicles (OIL STANDARD – HYBRID). Choose the proper mode by pressing **LEFT/RIGHT arrows** and confirm by pressing **OK**.
- Subsequently, the station shows the new oil quantity (default: 30 grams), which can be accepted by pressing **OK** or adjusted by pressing **UP/DOWN arrows** and then **OK**. *For new oil quantities, refer to values given by vehicle's manufacturer (see paragraph 4.1).*

5. The display shows START. Confirming by pressing **OK**, the cycle begins automatically, executing in sequence:
 - GAS RECOVEY (with de-icing pause)
 - OIL DISCHARGING (automatic phase)
 - VACUUM PHASE (with leaking test “diagnosis”)
 - OIL INJECTION (new oil)
 - GAS CHARGE (with sound alarm at end)
 - PRINT BILL (charging cycle report)
6. Charge operation is over. At this point, it is appropriate to execute manually the pressures test, following the instructions at paragraph 3.7. This operation cannot be executed automatically.
7. Once the pressures test is finished, turn off the station and remove the quick couplings from the vehicle.

3.4 Manual use

Automatic-mode operations can be executed individually in manual mode, except for the use of internal vehicle database. To access manual mode, once the station has been turned on, press **RIGHT arrow** to commute from AUTO to MAN. The available refrigerant gas quantity and new oil quantity remain still shown on the display.



Once executed the preliminary operations described in previous paragraphs (including gas and oil refilling if necessary), proceed as follows:

1. Press **OK** to begin manual cycle. First, the station requires to input the vehicle license plate. Use **alphanumerical keys** to input the license plate and confirm by pressing **OK**.
2. The station requires to input the vehicle total mileage (ODO). Use **alphanumerical keys** to input the value and confirm by pressing **OK**.

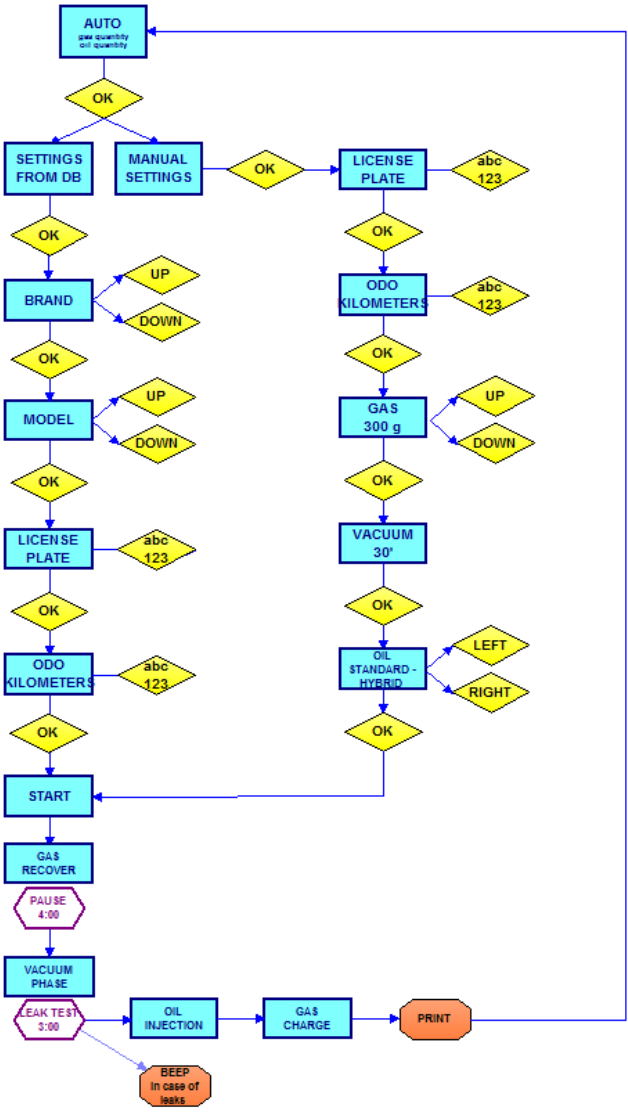
3. At this point, the station requests the quantity of refrigerant gas to be introduced into the vehicle's A/C circuit. The amount can be accepted by pressing **OK** or adjusted by pressing **UP/DOWN arrows** and then **OK**.
4. The station shows the vacuum time (default: 30 minutes), which can be accepted by pressing **OK** or adjusted by pressing **UP/DOWN arrows** and then **OK**. *Note: we recommend to perform the default vacuum time.*
5. (*OPTIONAL FUNCTION*) The station then asks to use oil standard mode or oil hybrid mode for hybrid vehicles (OIL STANDARD – HYBRID). Choose the proper mode by pressing **LEFT/RIGHT arrows** and confirm by pressing **OK**.
6. Subsequently, the station shows the new oil quantity (default: 30 grams), which can be accepted by pressing **OK** or adjusted by pressing **UP/DOWN arrows** and then **OK**. *For new oil quantities, refer to values given by vehicle's manufacturer (see paragraph 4.1).*

7. At this point, it is possible to select the various cycle phases, which can be chosen by pressing **UP/DOWN arrows** and executed by pressing **OK**. Individually-executable phases are:

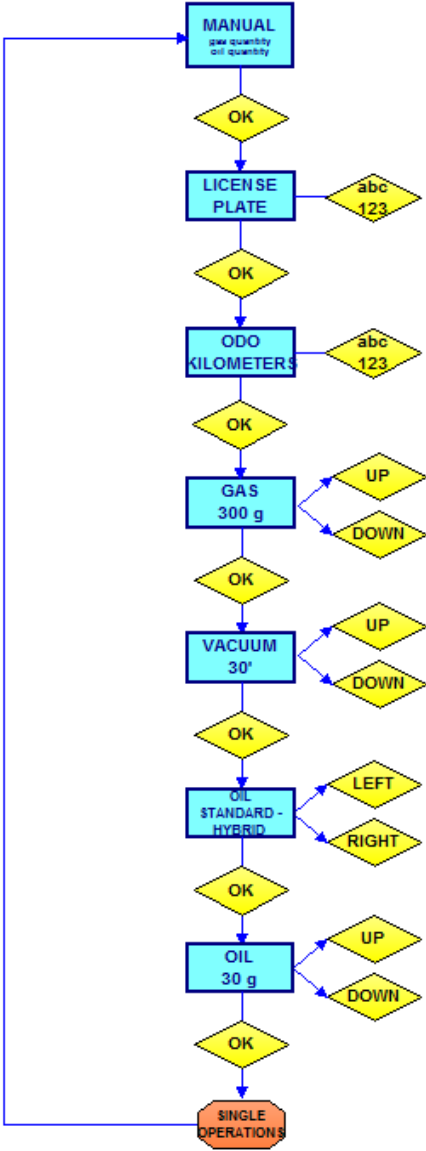
- GAS RECOVERY (with de-icing pause)
- OIL DISCHARGING
- VACUUM PHASE (with leaking test “diagnosis”)
- OIL INJECTION (new oil)
- GAS CHARGE (with sound alarm at end)
- PRINT BILL (charging cycle report)

At the end of each phase, however, the station does NOT switch automatically to the following step, but requires user intervention.

3.5 Synoptic diagram: automatic mode



3.6 Synoptic diagram: manual mode



3.7 Pressures test

Once the charge operation is over, execute the pressures test by using the table below, in this way:

1. Let the station connected to the vehicle with closed valves.
2. Turn on the vehicle and the vehicle A/C system, setting it to the lowest temperature possible.
3. Let the engine run for some minutes at about 2000 rpm.
4. Check the values on high/low pressure gauges, comparing them with those reported in the table below.

Environment temperature °C	LOW PRESSURE			HIGH PRESSURE		
	R134a			R134a		
	min		max	min		max
15,5	0,5	-	2,5	6,5	-	10
18	0,5	-	2,5	7	-	12
22	0,5	-	2,5	8	-	14
30	0,5	-	2,5	10	-	17
35	0,5	-	2,5	11,5	-	20
40	0,5	-	3	14	-	22

4 SERVICE

4.1 New/exhausted oil

EXHAUSTED OIL

Empty the oil container when it reaches about 200/220 cc.

The exhausted oil must be disposed of in the appropriate sites.

Do not disperse into the environment.

NEW OIL

New oil level must never be less than 80/100 cc. Under this level, the station is not operative.

We advise to use specific oil recommended by vehicle's manufacturer, or anyway oil suitable for R134a refrigerant, and to respect the quantities recommended by vehicle's manufacturer.

4.2 Dehydrator filter replacement

Recommended interval for filter replacement is 300 cycles. We recommend to execute the maintenance at authorized centers.

Access MAINTENANCE mode by pressing the proper button on control panel. Enter ADVANCED MENU and press **OK**. Input password 2454 and press **OK**. Select FILTER CHANGE and confirm by pressing **OK** in order to begin GAS RECOVERY. Executing this operation, there will not be gas leaks during filter replacement.



WARNING: Mount the filter as in Figure 5.

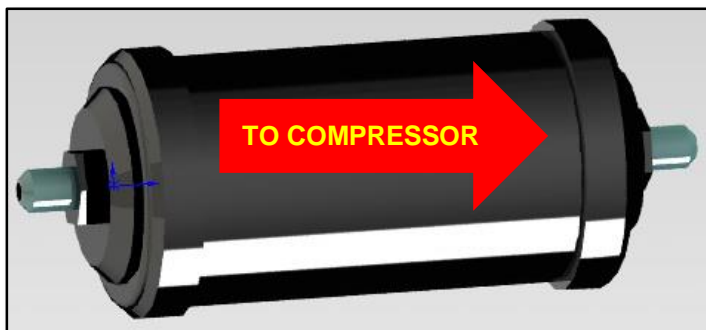


Figure 6

4.3 Vacuum pump oil replacement

Recommended interval for pump oil replacement is 300 cycles. We recommend to execute the maintenance at authorized centers.

- Periodically check the pump oil level.
- Replace pump oil at recommended intervals, and in any case after the first 100 working hours or in the case it darkens.

PROCEDURE

- Empty the pump by the screw at the bottom. (2)
- Open the tap at the top and introduce new oil. (1)
- Check the oil level (it must be about at half of the glass) (3)



WARNING: The exhausted oil must be disposed of in the appropriate sites, following the environmental laws and regulations in force in your nation/region.

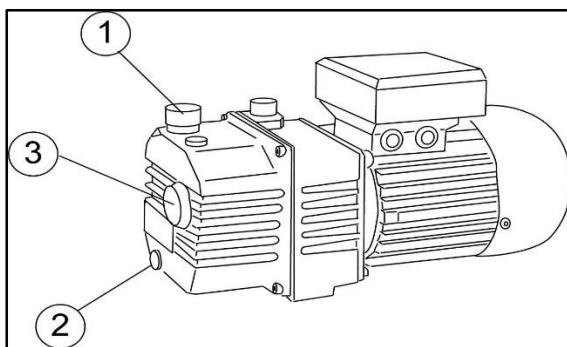


Figure 7

4.4 Date and time setting

In order to adjust date and time of the station, proceed as follows:

1. Access to PARAMETERS mode and confirm by pressing **OK**.
2. Select DATE & TIME and confirm by pressing **OK**.
3. Input current date by **alphanumerical keys** and confirm by pressing **OK**.
4. Input current time by **alphanumerical keys** and confirm by pressing **OK**.
5. Select the preferred date format and confirm by pressing **OK**.
6. Select the preferred time format and confirm by pressing **OK**.

4.5 Language setting

To set the station language, proceed as follows:

1. Access to PARAMETERS mode and confirm by pressing **OK**.
2. Select LANGUAGE and confirm by pressing **OK**.
3. Choose the preferred language from the list using **UP/DOWN arrows** and confirm by pressing **OK**.

4.6 Default vacuum time setting

In order to set the default vacuum time, proceed as follows:

1. Access to PARAMETERS mode and confirm by pressing **OK**.
2. Choose VACUUM TIME and confirm by pressing **OK**.
3. Set the vacuum time by **alphanumeric keys** and confirm by pressing **OK**.

The pre-set vacuum time is 30 minutes. We advise to maintain this setting.

4.7 Default oil quantity setting

To adjust the default oil quantity, proceed as follows:

1. Access to PARAMETERS mode and confirm by pressing **OK**.
2. Choose OIL QUANTITY and confirm by pressing **OK**.
3. Set the oil quantity by **alphanumeric keys** and confirm by pressing **OK**.

The pre-set oil quantity is 30 grams, and it can be modified at any charging cycle.

4.8 Hoses length setting

The station allows to modify the HP and LP hoses (tubes) length. Default length is 200 cm.

In order to set hoses length, proceed in this way:

1. Access to PARAMETERS mode and confirm by pressing **OK**.
2. Choose ADVANCED MENU and confirm by pressing **OK**.
3. Input password 2454 by **alphanumeric keys** and confirm by pressing **OK**.
4. Select HOSES LENGTH and confirm by pressing **OK**.
5. Modify the value by pressing **LEFT/RIGHT arrows** and confirm by pressing **OK**.

This operation should be performed by specialized personnel at authorized centers; we strongly advise to avoid performing it yourselves.

4.9 Used-oil bottle capacity setting

It is possible to set the capacity of used-oil bottle. Default value is 250 grams.

To adjust this parameter, proceed as follows:

1. Access to PARAMETERS mode and confirm by pressing **OK**.
2. Choose ADVANCED MENU and confirm by pressing **OK**.
3. Input password 2454 by **alphanumeric keys** and confirm by pressing **OK**.
4. Select USED OIL BOX GRAMS and confirm by pressing **OK**.
5. Modify the value by pressing **LEFT/RIGHT arrows** and confirm by pressing **OK**.

This operation should be performed by specialized personnel at authorized centers; we strongly advise to avoid performing it yourselves.

4.10 Logo customization

It is possible to customize the logo appearing on display when turning on the station, with the following procedure:

1. Access to PARAMETERS mode and confirm by pressing **OK**.
2. Choose ADVANCED MENU and confirm by pressing **OK**.
3. Input password 2454 by **alphanumeric keys** and confirm by pressing **OK**.
4. Select CUSTOMIZED BRAND and confirm by pressing **OK**.
5. Modify the logo using **alphanumeric keys** and **arrow keys**, and finally confirm by pressing **OK**.

4.11 Station ID viewing

Every station has an identification numerical sequence (ID number), which can be shown. The ID is necessary to obtain database updates. Proceed as follows:

1. Access to PARAMETERS mode and confirm by pressing **OK**.
2. Choose ADVANCED MENU and confirm by pressing **OK**.
3. Input password 2454 by **alphanumeric keys** and confirm by pressing **OK**.
4. Select SHOW ID DEVICE and confirm by pressing **OK**.
5. The ID number appears on display. Press **ESC** to return to parameters menu.

Note: it is not possible to send the ID number to the station's printer. It can only be shown on display, so, if necessary, it has to be manually transcribed by user.

4.12 Database loading from USB support

The station is equipped with an USB port which allows to load new databases into the internal memory (SD card). If the user has an USB drive with a properly created database, he may proceed as follows:

1. Access to PARAMETERS mode and confirm by pressing **OK**.
2. Choose ADVANCED MENU and confirm by pressing **OK**.
3. Input password 2454 by **alphanumeric keys** and confirm by pressing **OK**.
4. Insert the USB drive into station's USB port.
5. Select LOAD DB FROM USB and confirm by pressing **OK**.
6. The new database is loaded into the internal memory. If the operation fails, an error message may appear.
7. Once done, extract the USB drive.

This operation should be performed by specialized personnel at authorized centers; we strongly advise to avoid performing it yourselves.

4.13 Logs downloading to USB drive

The USB port may be also used to download station's logs (reports of executed charging cycles) to an USB drive. With a valid USB drive at hand, proceed as follows:

1. Access to PARAMETERS mode and confirm by pressing **OK**.
2. Choose ADVANCED MENU and confirm by pressing **OK**.
3. Input password 2454 by **alphanumerical keys** and confirm by pressing **OK**.
4. Insert the USB drive into station's USB port.
5. Select DOWNLOAD LOGS and confirm by pressing **OK**.
6. The logs are saved in the USB drive.
7. Once done, extract the USB drive.

4.14 Information about SD memory card

The station stores its logs on a SD memory card. Information about the card may be viewed as follows:

8. Access to PARAMETERS mode and confirm by pressing **OK**.
9. Choose ADVANCED MENU and confirm by pressing **OK**.
10. Input password 2454 by **alphanumeric keys** and confirm by pressing **OK**.
11. Choose INFO MEMORY SD and confirm by pressing **OK**.
12. The station views the SD total capacity and the SD free space in kilobytes.
13. Press **ESC** to return to parameters menu.

4.15 Logs deletion

Station's logs can be deleted from SD card. *Warning: the station has no other memories than the SD card, so the logs, once deleted, could not be recovered.* Proceed as follows:

1. Access to PARAMETERS mode and confirm by pressing **OK**.
2. Choose ADVANCED MENU and confirm by pressing **OK**.
3. Input password 2454 by **alphanumeric keys** and confirm by pressing **OK**.
4. Select DELETE SD LOG and confirm by pressing **OK**.
5. Press **OK** again to finish the operation.
6. The logs are irredeemably deleted from the SD memory card.

4.16 Last log printing (“print bill”)

It is possible to print the log of the last charging cycle performed, proceeding as follows:

1. Access to MAINTENANCE mode and confirm by pressing **OK**.
2. Select PRINT BILL and confirm by pressing **OK**.
3. Last operation log is printed.

*Note: it is possible to perform this operation more quickly pressing the **last print button** (→ Fig. 3) on the keyboard.*

4.17 Total cycles viewing

It is possible to view the total number of charging cycles performed by the station. This operation is particularly useful to program the maintenance. Proceed as follows:

1. Access to MAINTENANCE mode and confirm by pressing **OK**.
2. Select SHOW TOTAL CYCLES and confirm by pressing **OK**.
3. The display shows the total number of cycles performed.

4.18 Gas recovery

It is possible to manually run the gas recovery in this way:

1. Access to MAINTENANCE mode and confirm by pressing **OK**.
2. Choose ADVANCED MENU and confirm by pressing **OK**.
3. Input password 2454 by **alphanumerical keys** and confirm by pressing **OK**.
4. Select GAS RECOVERY and confirm by pressing **OK**.
5. The gas recovery is performed.

This operation should be performed by specialized personnel at authorized centers, with the vehicle properly connected to the station; we strongly advise to avoid performing it yourselves.

4.19 Oil discharging

It is possible to manually discharge the oil in this way:

1. Access to MAINTENANCE mode and confirm by pressing **OK**.
2. Choose ADVANCED MENU and confirm by pressing **OK**.
3. Input password 2454 by **alphanumeric keys** and confirm by pressing **OK**.
4. Select OIL DISCHARGING and confirm by pressing **OK**.
5. The operation is performed.

This operation should be performed by specialized personnel at authorized centers.

4.20 Vacuum phase

It possible to manually run the vacuum phase in this way:

1. Access to MAINTENANCE mode and confirm by pressing **OK**.
2. Choose ADVANCED MENU and confirm by pressing **OK**.
3. Input password 2454 by **alphanumerical keys** and confirm by pressing **OK**.
4. Select VACUUM PHASE and confirm by pressing **OK**.
5. The vacuum phase is performed.

This operation should be performed by specialized personnel at authorized centers, with the vehicle properly connected to the station; we strongly advise to avoid performing it yourselves.

4.21 Oil injection

It is possible to manually run the oil injection in this way:

1. Access to MAINTENANCE mode and confirm by pressing **OK**.
2. Choose ADVANCED MENU and confirm by pressing **OK**.
3. Input password 2454 by **alphanumeric keys** and confirm by pressing **OK**.
4. Select OIL INJECTION and confirm by pressing **OK**.
6. The operation is performed.

This operation should be performed by specialized personnel at authorized centers, with the vehicle properly connected to the station; we strongly advise to avoid performing it yourselves.

4.22 Gas charge

It is possible to manually run the gas charge in this way:

1. Access to MAINTENANCE mode and confirm by pressing **OK**.
2. Choose ADVANCED MENU and confirm by pressing **OK**.
3. Input password 2454 by **alphanumeric keys** and confirm by pressing **OK**.
4. Select GAS CHARGE and confirm by pressing **OK**.
7. The operation is performed.

This operation should be performed by specialized personnel at authorized centers, with the vehicle properly connected to the station; we strongly advise to avoid performing it yourselves.

4.23 Other operations

MAINTENANCE menu includes various other possible operations, which *should be executed by specialized personnel at authorized centers*. In particular:

- Gas scale calibration
- New oil scale calibration
- Used oil scale calibration
- Gas tank emptying

We strongly advise to NOT execute these operations by yourselves, because they may involve the dismounting of some parts of the station. Moreover, if not properly performed, these operations may cause malfunctions and potentially dangerous situations, as well as warranty expiration.

5 TECHNICAL SPECIFICATIONS

COMPRESSOR	17 cc
VACUUM PUMP	8 cfm
GAS TANK	35 liters
FILTERS	High-efficiency filters
WORKING TEMPERATURE	Da 10°C a 50°C
VOLTAGE	220/230 V 50 Hz
DIMENSIONS	650x650x1300 mm
WEIGHT	90 kg
REFRIGERANT FLUID TYPE	R134a

6 TROUBLESHOOTING

PROBLEM	SOLUTIONS
General problems	
The station doesn't work, the switch is not illuminated.	5
Turning on the station, the display is not illuminated.	1-2-3
The station works, but does not accept any input from the control panel.	1-2-3
Weighing problems	
Turning on the station, the gas weight is not indicated, although the fluid is present.	9-10
During the recovery phase, the station does not indicate the weight of recovered gas.	8-9-10-16-20
Working problems	
At the beginning of the cycle, the station bypasses recovery phase and switches directly to vacuum phase.	1-14-15-20
The recovery phase begins, but no gas is recovered.	1-8-14-15-16-20
Vacuum phase does not create vacuum.	1-13-21
Gas charging is not completed.	23-25-26

SOLUTIONS LIST

1. Replace CPU motherboard *
2. Replace display card *
3. Replace display connection cable *
4. Calibrate the station (reset tare)
5. Check main fuse (the one mounted in feeding socket)
6. Check secondary fuse in transformer circuit
7. Replace vacuum switch
8. Replace compressor *
9. Make sure the weight scale is not blocked
10. Replace refrigerant load cell and recalibrate the station
11. Replace oil load cell *
12. Replace solenoid valve *
13. Replace vacuum pump *
14. Replace pressure switch *
15. Verify pressure switch calibration *
16. Make sure the receiver's taps are open
17. Replace heater resistance (if present)
18. Check power cable
19. Replace transformer *
20. Replace solenoid valve INLET *
21. Replace solenoid valve VACUUM *
22. Replace solenoid valve RECOVERY *
23. Replace solenoid valve CHARGE *
24. Replace solenoid valve OIL CHARGE *
25. Check if the vacuum has been performed
26. Check the oil level in new oil container

* = call assistance service

7 SPARE PARTS

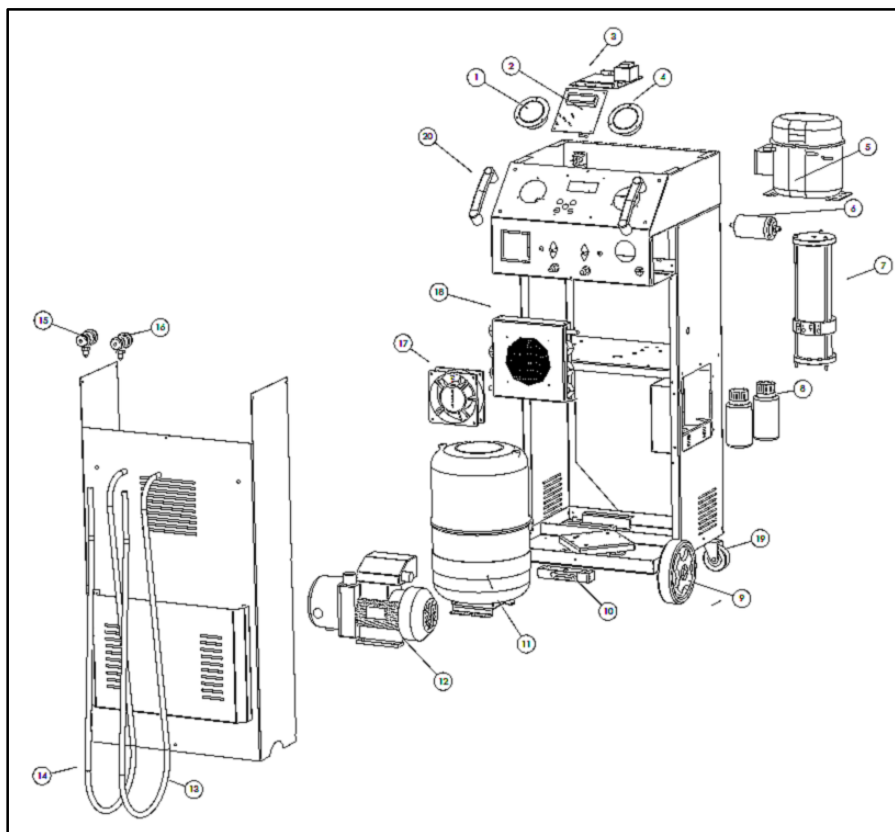


Figure 8

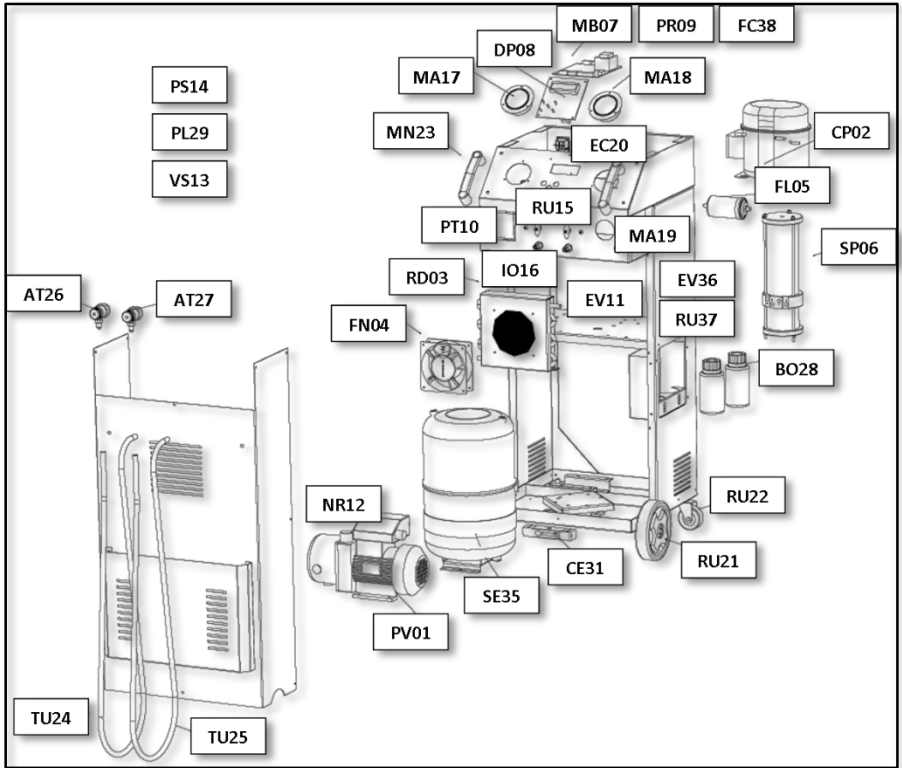


Figure 9

8 CONFORMITY DECLARATIONS



Dichiarazione di Conformità
EC Declaration of Conformity



Itech di Moro Giampaolo
Via Provinciale, 35
24020 Peia Bergamo Italy

dichiaro sotto la nostra esclusiva responsabilità che il prodotto
declare under our exclusive responsibility that the product

<i>Device for handling air</i>	<i>with serial number</i>
--------------------------------	---------------------------

alla quale questa dichiarazione si riferisce, risponde alle seguenti Direttive applicabili
to which this declaration relates, complies with the following applicable Directives

2006/42/WE	Machinery Directive
2006/95/WE	Low Voltage Directive
2004/108/WE	Electromagnetic Compatibility Directive

Per la conformità alle suddette direttive sono state seguite, in modo totale o parziale, le seguenti Norme Armonizzate:
In order to comply with the abovementioned directives, were followed, wholly or partly, the following Harmonized Regulations:

EN ISO 12100:2012P	Safety of machinery – General principles for design – Risk assessment and risk reduction
EN 6014-1:2012P	Electromagnetic compatibility – Requirements for household appliances, electric tools and similar apparatus – Part 1: Emission
EN 61000-6-3:2008/A1:2012P	Electromagnetic compatibility (EMC) – Part 6-3: Generic standards – Emission standard environments: residential, commercial and light-industrial
EN 61000-6-2:2008P	Electromagnetic compatibility (EMC) – Part 6-2: Generic standards – Immunity for industrial environments
EN 60847-1:2010/A1:2011E	Switchgear and control Voltage – Part 1: Generality
EN 60204-1:2010P	Safety of machinery – Electrical equipment of machines – Part 1: General Requirements

I TECH di Moro Giampaolo
Via Provinciale 35 24020 Peia Dg
P.IVA 03817810165
C.F. MRCCPL57L17D982M
REA 843410825

La persona preposta a costruire il fascicolo tecnico è Itech di Moro Giampaolo
The entity responsible for the technical documentation is Itech

ITECH di Moro Giampaolo

www.itechct.it
info@itechct.it