



A/C CHARGING STATION

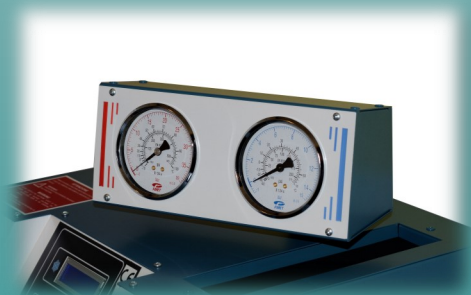
EVERYTHING UNDER CONTROL

The A/C charging stations with rotating pressure gauges

Our **5** station provides a full-range charging capability for **R134a** vehicles, with a very classic tower design and all the necessary accessories. The particularity of this station, appreciated by many operators, is the **rotating support for high and low pressure gauges**, which allows the observation from different points of the workshop.

Equipped with internal vehicle **database**.

More info on www.itechct.it.



TECHNICAL SPECIFICATIONS	
COMPRESSOR	9 cc
VACUUM PUMP	2 cfm
GAS TANK	12 l
FILTERS	High-efficiency
WORKING TEMPERATURE	Da 10 °C a 50 °C
VOLTAGE	230 V 50 Hz
DIMENSIONS	430x410x1100 mm
WEIGHT	60 kg (approx)

R134a